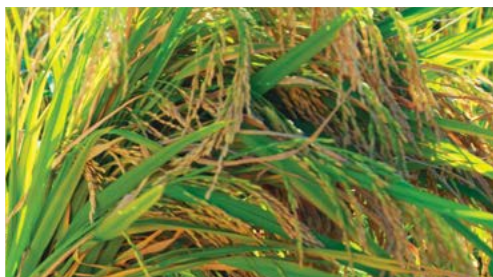


PROGRAM

1st IPI Symposium on Polyhalite 第一届国际钾肥研究所硫酸钾钙镁研讨会

A New Potassium Fertilizer with Complete Secondary Nutrients
全中量元素解决方案

31 October 2017, Wyndham Sanya Bay, Sanya, Hainan, China
2017年10月31日中国 海南 三亚 丽禾温德姆酒店



Polyhalite, a New Potassium Fertilizer with Complete Secondary Nutrients

硫酸钾钙镁, 全中量元素解决方案

Monday, 30 October 2017
星期一, 2017年10月30日

All day 全天

Registration
报到注册

Tuesday, 31 October 2017
星期二, 2017年10月31日

08:30-08:50

Opening ceremony
开幕典礼

08:50-09:20

Typical crop responses to polyhalite in various agro-climatic regions: a global view

不同农业气候区典型作物对杂卤石的响应: 全球视野

Hillel Magen, International Potash Institute, Switzerland
Hillel Magen, 国际钾肥研究所, 瑞士

09:20-09:50

Strengthening the study of secondary nutrients and promoting scientific-based fertilization

加强中微量元素研究、促进科学施肥

Xinping Chen, Southwest University, China
陈新平教授, 西南大学, 中国

09:50-10:20

Sulphur Consumption in Chinese Agriculture: Situation and Outlook
中国硫养分消费现状与展望

Gao Xiangzhao, National Agriculture Technology Extension Service Center, China
高祥照博士, 全国农业技术推广服务中心



10:20-11:00

Tea break and group photography
茶歇和合影

11:00-11:30

Effects of calcium and magnesium on potato tuber yield, quality and disease incidence in Inner Mongolia of China
钙和镁对内蒙古马铃薯产量、品质和抗病性的影响

Mingshou Fan, Inner Mongolia Agricultural University, China
樊明寿教授, 内蒙古农业大学, 中国

11:30-12:00

Effects of polyhalite application on seed yield, seed quality and nutrient uptake of winter oilseed rape
杂卤石的施用对冬油菜产量、品质和养分吸收的影响

Jianwei Lu, Huazhong Agricultural University, China
鲁剑巍教授, 华中农业大学, 中国



12:00-14:00

Lunch
午餐

14:00-14:30

Improving the growth and yield of crops in Europe and South America with polyhalite
杂卤石的施用促进欧洲和南美洲作物的生长和产量的提高

Eldad Sokolowski, International Potash Institute, Coordinator for China
Eldad Sokolowski, 国际钾肥研究所中国区协调人

14:30-15:00

Nutrients release kinetics of polyhalite and its biological effects on tea growth and quality in China

杂卤石的养分动力学释放特征以及杂卤石的施用对茶叶生长和品质的影响

Kang Ni, Tea Research Institute, Chinese Academy of Agricultural Sciences, China
倪康博士, 中国农科院茶叶研究所, 中国

15:00-15:30

Effects of polyhalite application on yield and quality of tobacco and tea in Yunnan province of China

杂卤石的施用对云南烟草和茶叶产量和品质的影响

Li Tang, Yunnan Agricultural University, China
汤利教授, 云南农业大学, 中国

15:30-16:00

Effects of polyhalite application on honey pomelo yield and quality in Fujian province of China

杂卤石的施用对福建蜜柚产量和品质的影响

Liangquan Wu, Fujian Agriculture and Forestry University, China
吴良泉副教授, 福建农林大学, 中国



16:00-16:30

Tea break
茶歇

16:30-17:00

Effects of polyhalite application on yield and quality of apples, tomato and maize in China

杂卤石的施用对苹果、马铃薯和玉米产量和品质的影响

Ning Ma, WZF, China
马宁农艺师, 五洲丰农业科技有限公司, 中国

17:00-17:30

Improving the growth and yield of crops in Malaysia with polyhalite

杂卤石的施用促进马来西亚农作物的生长与产量

Seh Cheng Siang, ICL Specialty Fertilizers, Malaysia
谢征祥, 以色列化工集团特种肥料, 马来西亚

17:30-18:00

Summary of effects of polyhalite application on different crops in China
杂卤石在我国不同农作物上的肥效总结

Guohua Li, ICL Fertilizers, China
李国华博士, 以色列化工集团, 中国

18:00-18:20

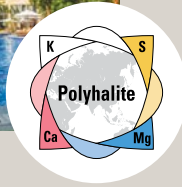
Concluding remarks
总结

Hillel Magen, International Potash Institute, Switzerland
Hillel Magen, 国际钾肥研究所, 瑞士



18:20-20:20

Dinner, hosted by IPI
晚餐, 国际钾肥研究所宴请



Hotel Information 宾馆信息

Wyndham Sanya Bay
海南三亚丽禾温德姆酒店
No.93 Xincheng Road, Sanya Bay,
Tianya District, Sanya, China
海南省三亚市天涯区三亚湾新城路93号

Phone电话

+86 0898-88656666

Routes 乘车路线

Taxi service from the Sanya Phoenix International Airport to the Wyndham Sanya Bay is about US\$ 3/RMB 20

三亚凤凰国际机场至三亚丽禾温德姆酒店5.8公里, 打车约20元

Taxi service from the Sanya Train Station to the Wyndham Sanya Bay is about US\$ 4/RMB 25

三亚高铁站至三亚丽禾温德姆酒店8.6公里, 打车约25元

International Potash Institute (IPI)

Industriestrasse 31,
CH-6300 Zug, Switzerland
T +41 43 810 49 22
F +41 43 810 49 25
ipi@pipotash.org
www.ipipotash.org

IPI Coordinator for China and sub-Saharan Africa

Mr. Eldad Sokolowski
c/o ICL Fertilizers
P.O. Box 75, Beer Sheva
8410001, Israel
T + 972 8 646 57 39
F + 972 8 628 09 95
Eldad.Sokolowski@icl-group.com

Polysulphate Agronomist

ICL Fertilizers China

以色列化工集团硫酸钾钙镁农艺师

Dr. Guohua Li
李国华博士
Pudong lab, Floor 14th of Not. 2 tower
of Jin Chuang Building,
No. 4560 of Jin Ke Road,
Shanghai 200021 China
上海浦东新区金科路4560号金创大厦
2号楼14楼
T +86 13466365788
Guohua.li@icl-group.com
www.polysulphate.com/cn